



# NORTH EAST RUBBER PUBLIC COMPANY LIMITED

North East Rubber Public Company Limited (NER), was established on June 12, 2006, is a well-known manufacturer and distributor of Ribbed Smoked Sheet (RSS), Standard Thai Rubber (STR), and Mixtures Rubber. With an annual production capacity of 515,600 tons, NER serves all demands of manufacturer and traders both domestic and international. NER has expanded product by adding the "Cattleflex" livestock rubber mat to product lines.

## NORTH EAST RUBBER PUBLIC COMPANY LIMITED

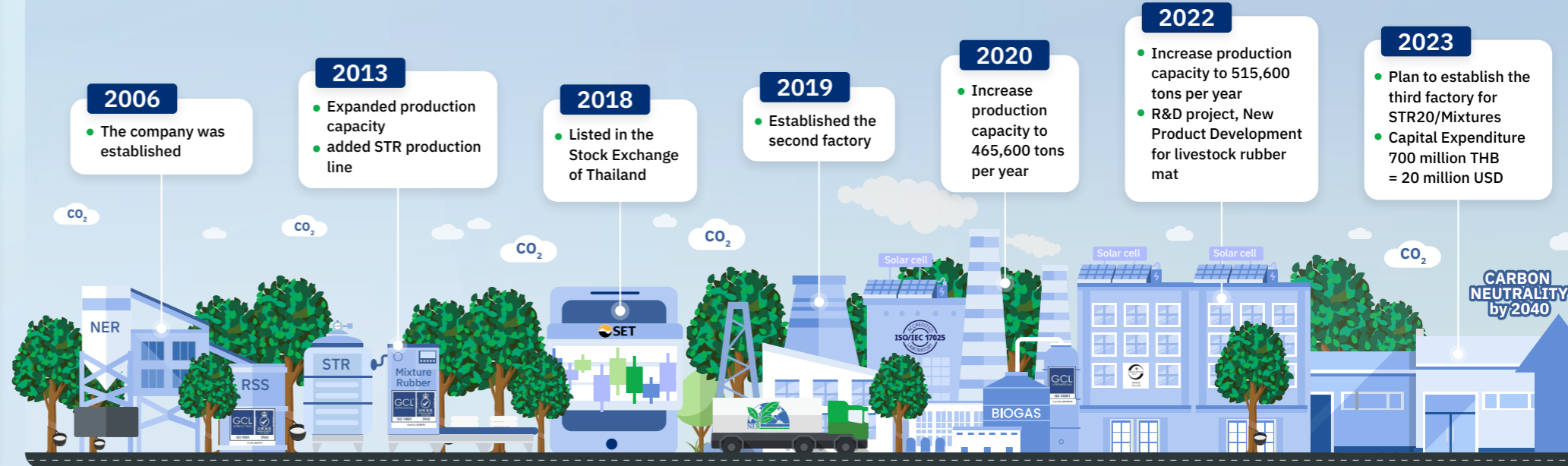
### Head Office

398 Moo.4, Kok Ma Sub-district, Prakhonchai District, Buriram 31140  
 (+66) 4466 6928 / (+66) 4466 6929  
 www.nerubber.com  
 www.cattleflex.com  
 ner@nerubber.com

### Sales Office

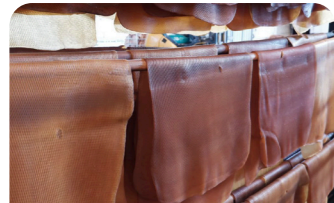
589/156, 28<sup>th</sup> Floor, Central City Tower, Debaratana Road, Bang Na Nuea Sub-district, Bang Na District, Bangkok 10260  
 Sales (+66) 83 009 7500  
 IR (+66) 65 992 2388  
 investor@nerubber.com

## MILESTONE



## BUSINESS

The company is a world-class manufacturer of high-quality rubber products, committed to honest and fair in business practices. It prioritizes clean energy and strives to be environmentally and community friendly while working towards expanding business into the downstream industry.



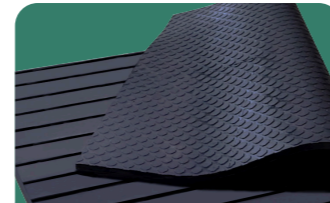
Ribbed Smoked Sheet: (RSS)



Standard Thai Rubber: (STR)



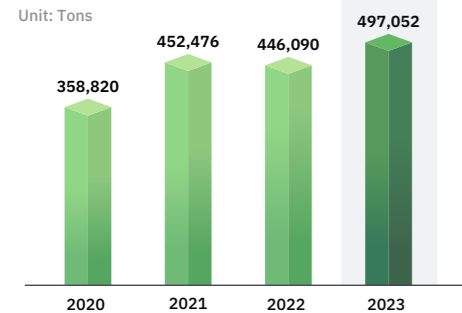
Mixture Rubber



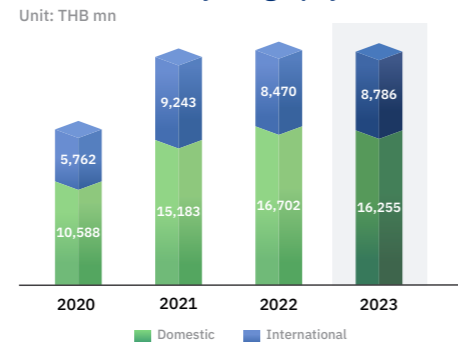
Livestock Rubber Mat Cattleflex

### Sales Breakdown

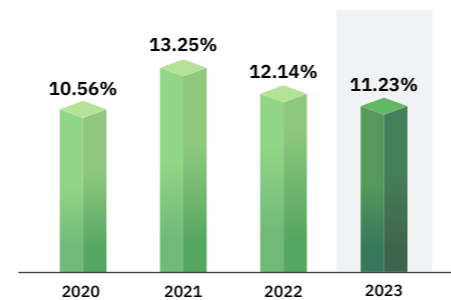
#### Sales Volume



#### Sales Revenue by Geography



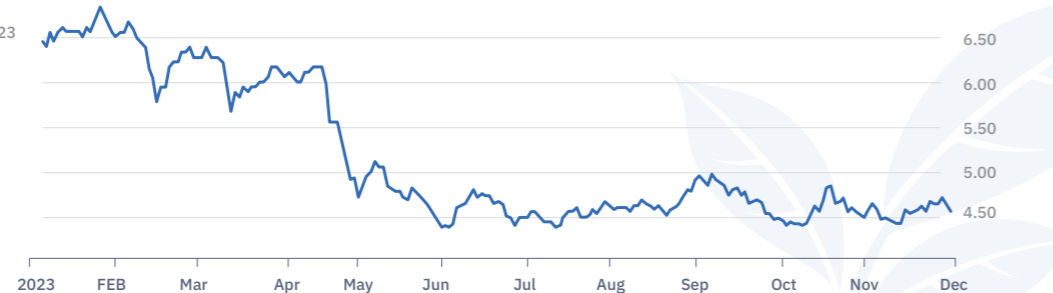
### Gross Margin GPM



### Stock Information

As of 28 Dec 2023

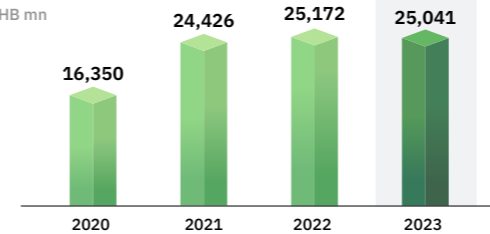
Last Price **4.96 THB**  
 52 Week High/Low: **4.40 / 6.30 THB**  
 Market Cap: **9,165.03 THB mn**  
 Free Float **62.96%** (As of 9 Mar 2023)



## FINANCIAL HIGHLIGHT

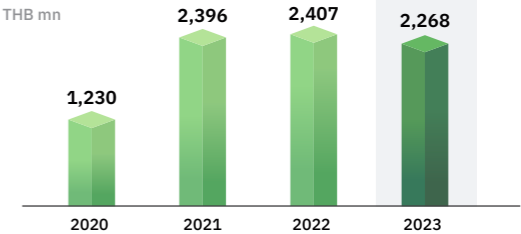
### Revenue

Unit: THB mn



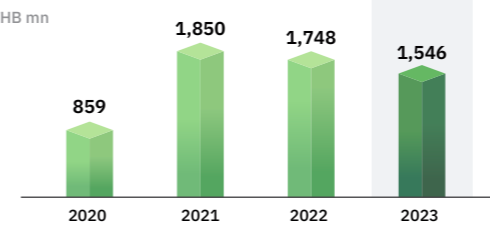
### EBITDA

Unit: THB mn



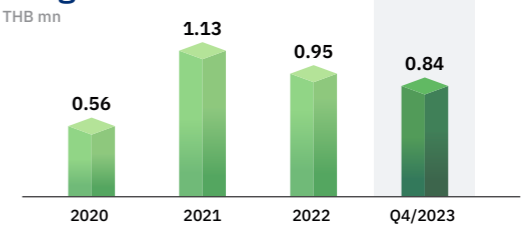
### Net Profit

Unit: THB mn



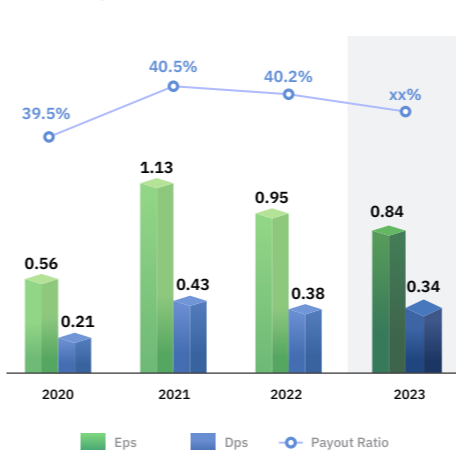
### Earning Per Share

Unit: THB mn



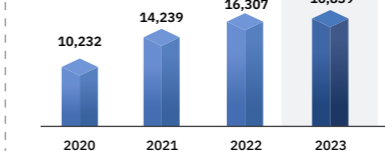
### Dividend

Unit: THB per Share



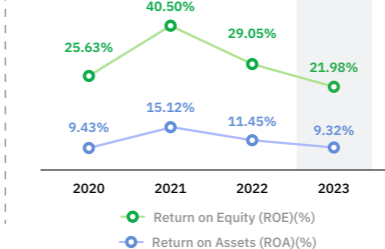
### Total Assets

Unit: THB mn



### ROA and ROE

Unit: %



### Shareholding Structure

As of 28 August 2023 from SET

